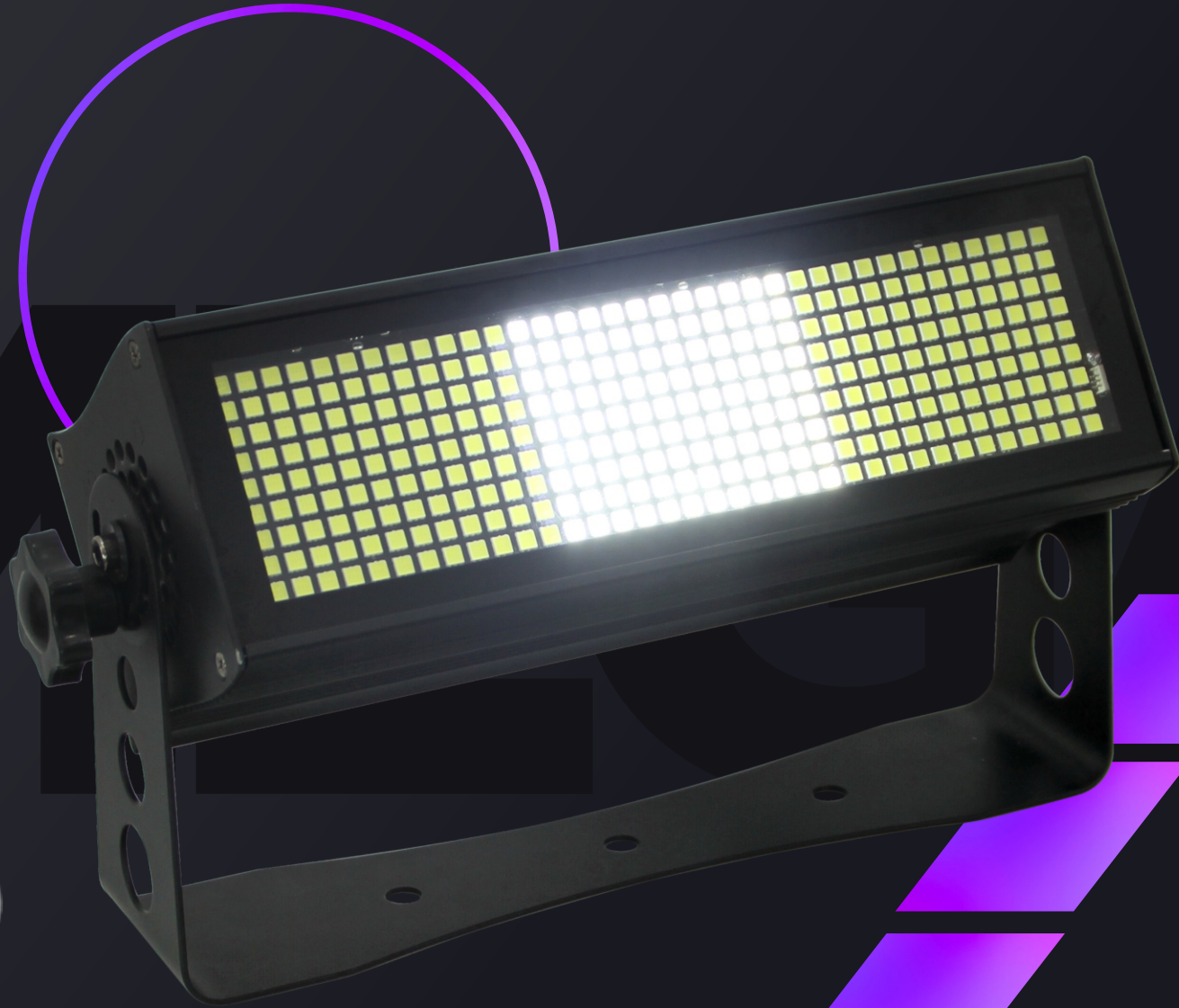


XS
LED STROBE W





DESCRIPTION



The XS LED Strobe W is an immensely bright, versatile fixture from Mega-Lite. It is equipped with a total of 324 White SMD LEDs. The LEDs have a wide 140° LED angle and the unit can operate as a wash, strobe or blinder light.

The XS LED Strobe W has 3 and 9 segments of control. Line up multiple unit together in matrix to create chases and other eye-catching effects. The blinder effect boosts the power of the LED for 4 seconds to give an enormous burst of light worthy of any stage or venue. The XS LED Strobe W is controlled via DMX 512. The unit has dimmer, blinder, duration, strobe, macro, 3 segment macros, 9 segment macro channels and 8 modes of operation. It is built with 5 pin XLR in and out connectors and PowerCon in and out connectors.

The XS LED Strobe W has a single mounting yoke. This compact unit measures in at 13.66" x 4" x 7.12" and 6.5 lbs.

Features.



COMPACT

The XS LED Strobe W's compact and light weight design allows for many versatile installations and uses.



VERY BRIGHT

At 259 Watts the XS LED Strobe W is a very bright fixture.



SEGMENT CONTROL

With 3 and 9 segments of control you can create incredible strobe, wash, or blinder effects.



The right lights for brilliant ideas.

Specifications.

Source:

Led Quantity: 324 WHITE SMD LEADS
Led Watts: 0.8

Efectos:

Color Temp: 6000K

Optical System :

Angle: 140°

Control & Programing:

Display: DIGITAL
Protocol: DMX 512
DMX Channels: 13 CHANNELS AND 8 MODES OF OPERATION.

Rigging:

Installation System: SINGLE MOUNTING YOKE

Electrical & Connections:

Power Connection: POWER CON IN & OUT
DMX Connectors: 5 PIN XLR CONNECTORS IN AND OUT
Power Supply: ELECTRONIC AUTO SWITCHING 110V-240V 50/60HZ
Power Consumption: WATTS: 259W / AMPS: 3.49

Dimensions:

Fixture Size: 13.66" X 4" X 7.12"
Fixture Weight: 6.5 lb
Packaged Size (Road Case): 30.5" x 23" x 20.66"
Packaged Weight (Road Case): 60.5 lb (Empty)

MEGA **LITE**®

WWW.MEGA.LIGHTING

18662 Bandera Rd
Helotes, TX 78023

Phone (210)684-2600 / Fax (210)855-6279
info@mega.lighting

m e g a . l i g h t i n g