

PAN T BOT

MEGA LITE[®]

PRODUCT SPECIFICATION SHEET

DESCRIPTION

MEGA-LITE presents the Pan T Bot, a versatile LED fixture with robust features that enable the unit be used as a blinder, strobe and wash.

This production-grade unit is equipped with 960 0.5W RGB LEDs and 300 white 1W LEDs. The vibrant Red, Green and Blue LEDs offer 80 segments of control that further enhance the users creativity when programming. The blinding white LEDs can be used as a strobe or divided into 10 segments using pre-programmed macros. Both sections can be independently controlled or combined allowing users to program a variety of eye-catching radiant looks. The RGB LEDs are fully pixel-mappable in extended mode and offer the user ultimate flexibility in bringing their vision to life.

In addition to the 270° 16 bit tilt, the Pan T Bot as its name entails also features a 540° 16 bit pan. This unique movement of both pan and tilt further enhance the effects of the unit by creating a multidimensional appearance.

Increase your creative possibilities with the Pan T Bot!



PAN & TILT

In addition to the 270° 16 bit tilt, the Pan T Bot as its name entails also features a 540° 16 bit pan. This unique movement of both pan and tilt further enhance the effects of the unit by creating a multidimensional appearance.



PIXEL EFFECT

The RGB LEDs are fully pixel-mappable in extended mode and offer the user ultimate flexibility in bringing their vision to life.



STROBE EFFECT

The blinding white LEDs can be used as a strobe or divided into 10 segments using pre-programmed macros.

SOURCE

• LED TYPE: 960 RGB 0.5W | 300 WHITE 1W (6670K)

OPTICAL SYSTEM

• LENS ANGLE: 89° RGB EMITTERS | 40° WHITE EMITTERS

EFFECTS

• FUNCTIONS: BLINDER, STROBE & WASH
• RGB PIXEL CONTROL: 80 RGB PIXEL CONTROL
• WHITE PIXEL CONTROL: 10 WHITE PIXEL CONTROL
• MACROS: SHUTTER, SPEED, COLOR & WHITE

CONTROL & PROGRAMMING

• DISPLAY: DIGITAL DISPLAY
• PROTOCOL: DMX 512
• RDM: YES
• DMX CHANNELS: 2 MODES OF OPERATION
• OPERATING MODE: STAND ALONE 255 STEP DIMMER SETTING VIA DISPLAY AUTO PREPROGRAM VIA DISPLAY

MOVEMENT

• PAN: 540° 8/16 BIT
• TILT: 270° 8/16 BIT

THERMAL & RATINGS

• MAX AMBIENT TEMP: 40°C (104°F)
• MAX SURFACE TEMP: 60°C (140°F)

ELECTRICAL & CONNECTIONS

• POWER CONNECTION: PANEL MOUNTED POWER CONN (TYPE) POWER IN/OUT CONNECTION
• DMX CONNECTORS: PANEL MOUNTED 3 AND 5-PIN XLR CONNECTORS IN/OUT
• ARTNET CONNECTIONS: PANEL MOUNTED RJ45 IN AND OUT
• POWER INPUT: UNIVERSAL 100V-240V 50/60HZ
• POWER CONSUMPTION: WATTS: 590W | AMPS: 5.04A @ 110V

RIGGING:

• INSTALLATION SYSTEM: 2 QUICK CONNECT CLAMP MOUNTS

ORDERING INFO:

• PAN T BOT **PART NUMBER:** 1187

INCLUDED ITEMS:

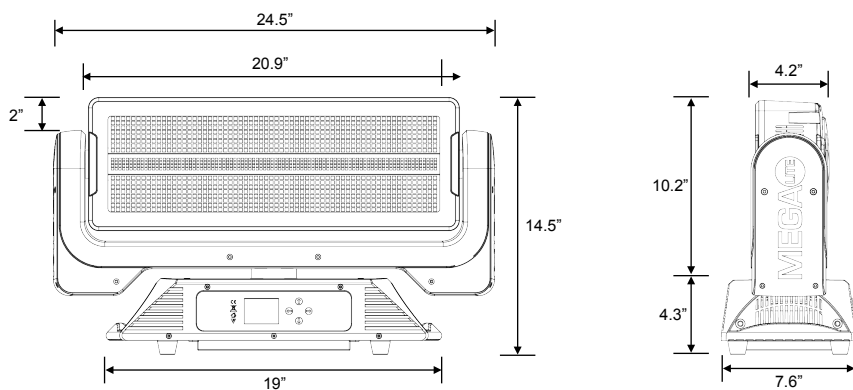
• POWER CABLE

ACCESSORIES:

• 2 UNIT ROAD CASE CAS-1187-2

DIMENSIONS:

• FIXTURE SIZE: 24.5" X 7.6" X 14.5"
• FIXTURE WEIGHT: 36 lb (16.33 kg)
• PACKAGED SIZE: 27.36" X 9" X 17.25"
• PACKAGED WEIGHT: 38.6 lb (17.5 kg)

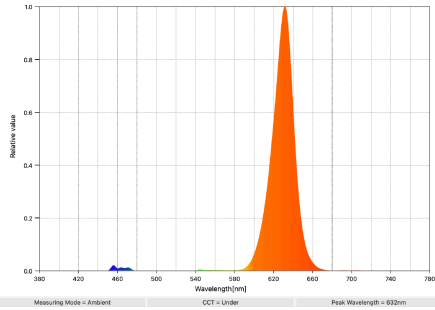


PHOTOMETRICS:

Lumens @ Full Output: 28595
Efficacy: 72 lm/W

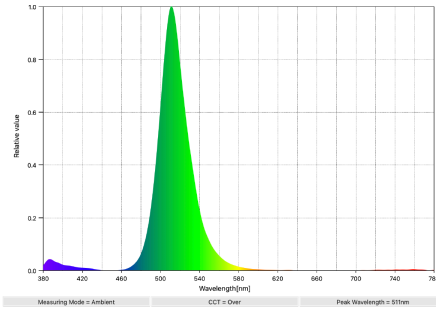
RED:

Peak Wavelength: 632nm
CIE 1931 x, y: 0.6839, 0.3007



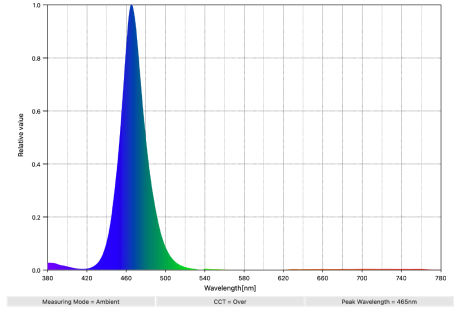
GREEN:

Peak Wavelength: 511nm
CIE 1931 x, y: 0.1134, 0.6885



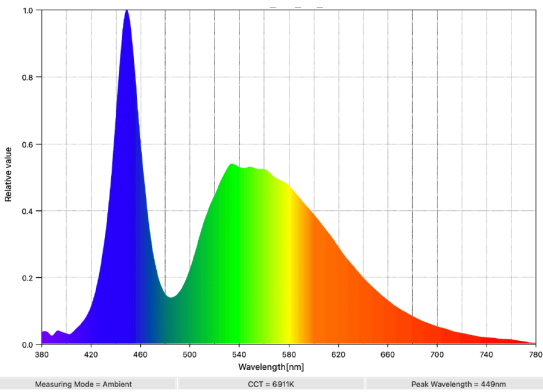
BLUE:

Peak Wavelength: 465nm
CIE 1931 x, y: 0.1313, 0.0655

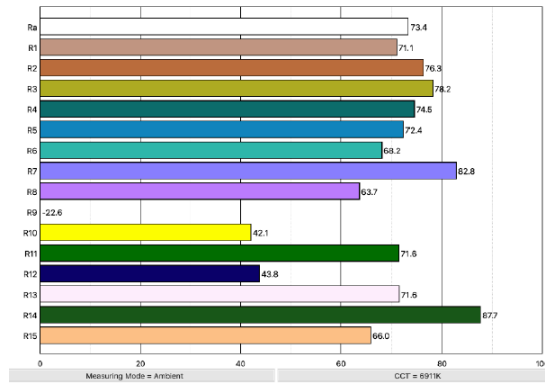


WHITE:

Peak Wavelength: 449 nm
CCT: 6911K



COLOR RENDERING:



NOMINAL BEAM ANGLE = 89°



NOMINAL BEAM ANGLE = 89

