



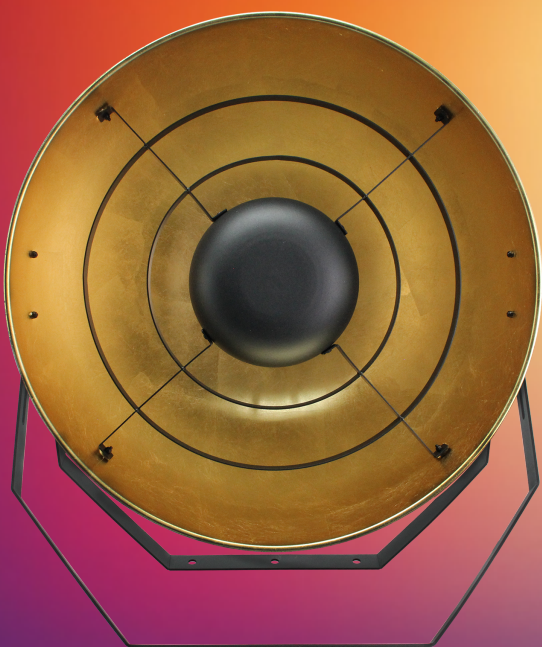
MEGALITE®
PRODUCT SPECIFICATION SHEET

DESCRIPTION

Designed with a traditional vintage look, the DECO Vintage Scoop Q32 features a 32W RGBWW LED. This lightweight fixture is designed with a reflective gold finish that enhances the depth effect on the saturated colors. The 2475K warm white creates a nice warm sunset effect, ideal for theatrical and studio utilization.

Using the double mounting yoke, the unit can be grouped vertically with others to create a grid. This ladder mounting capability is practical and can simplify the ability to create elaborate set ups, allowing this fixture to be used in small to large productions. If desired it can also be placed on a stand and be used individually.

As part of the DECO series, this unit uses Voltage over Ethernet and it is designed to provide versatility with simplicity by being able to connect to a number of DECO Drivers for power and control. Integrate your next project with the Deco Vintage Scoop Q32!



REVITALIZED LOOK

Designed with a traditional vintage look, the unit features a 32W RGBWW LED. This lightweight fixture is designed with a reflective gold finish that enhances the depth effect on the saturated colors.



TetraColor

The vivid red, green and blue color hues this fixture projects can transform any room setting. The 2475K warm white can create nice soft tones that can add depth and soften the mood.



LADDER MOUNT

Using the double mounting yoke, the unit can be grouped vertically with others to create a grid. This ladder mounting capability is practical and can simplify the ability to create elaborate set ups, allowing this fixture to be used in small to large productions. If desired it can also be placed on a stand and be used individually.

SOURCE

- LED TYPE: SMD 5050 RGBWW
- LED QUANTITY: 140
- LED WATTAGE: .25W EACH

PHYSICAL

- HOUSING MATERIAL: STEEL
- CABLE: 7.2 FT
- REFLECTOR ANGLE: 74°

EFFECTS

- TETRA COLOR: RED, GREEN, BLUE, WARM WHITE
- COLOR TEMP: 2475K ON WARM WHITE

CONTROL & PROGRAMMING

- DRIVER COMPATIBILITY: THREE UNITS PER OUTPUT PORT OF DECO DRIVER
- CONTROL: DMX 512 (WHEN USING DECO DRIVER)
- DMX CHANNELS: 2 MODES OF OPERATION

ELECTRICAL & CONNECTIONS

- TOTAL MAX POWER: 32W
- POWER INPUT: 24V DC
- POWER CONNECTION: Y CABLE MOUNTED RJ45 IN & OUT
- DRIVE METHOD: CONSTANT VOLTAGE
- LUMEN OUTPUT: 1107LM (@FULL)

RIGGING:

- INSTALLATION SYSTEM: UNIVERSAL MOUNTING CONNECTS TO ELECTRICAL BOX

ORDERING INFO:

- DECO VINTAGE SCOOP Q32 5043

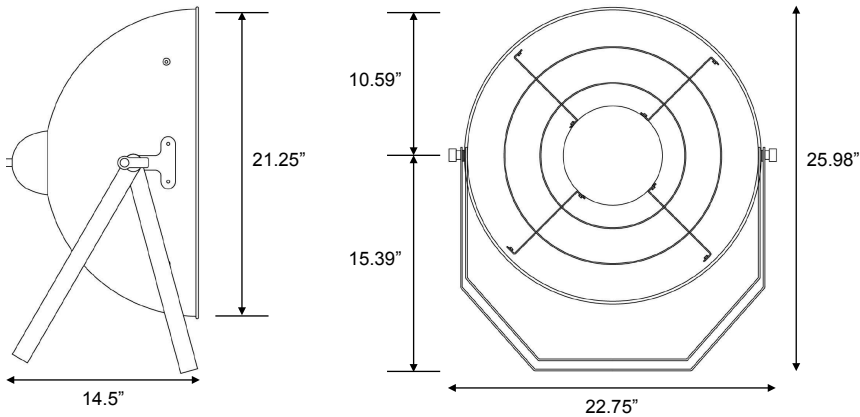
ACCESORIES:

- DUAL ROAD CASE CAS-5043-2

SPECIFICATIONS SUBJECT TO CHANGE*

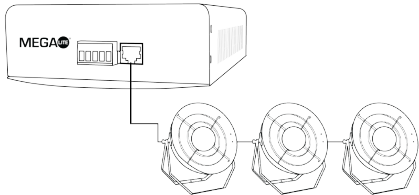
DIMENSIONS:

- FIXTURE SIZE: 22.75" X 14.5" X 25.98"
- FIXTURE WEIGHT: 13 IB
- PACKAGED SIZE: 28" X 24" X 16"
- PACKAGED WEIGHT: 19 IB

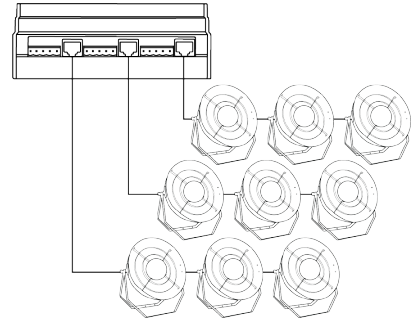


CONNECTION:

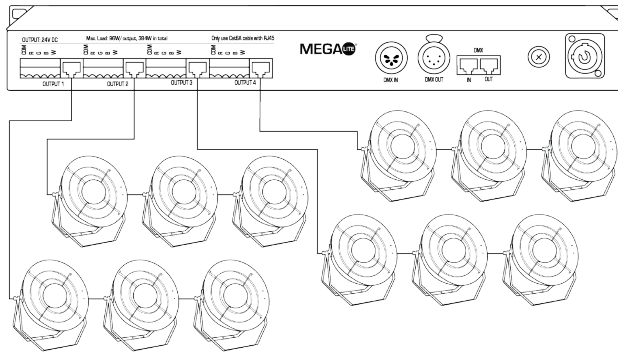
DECO DRIVE CV1
(One unit per output port
Total of 1 output x 3 fixtures.)



DECO DRIVE CV3 DIN
(One unit per output port
Total of 3 outputs x 9 fixtures.)



DECO DRIVE CV4
(One unit per output port
Total of 4 outputs x 12 fixtures.)

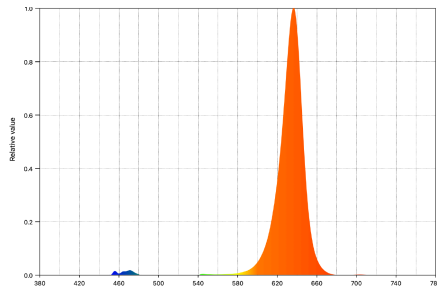


PHOTOMETRICS:

23° Lens Lumens @ Full Output: 1107

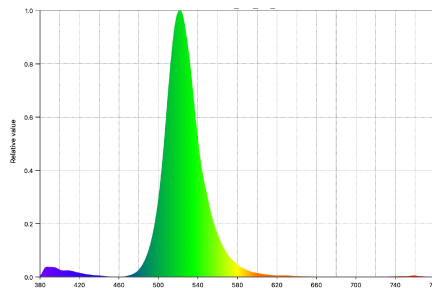
RED:

Peak Wavelength: 636 nm
CIE 1931 x, y: 0.6852, 0.2969



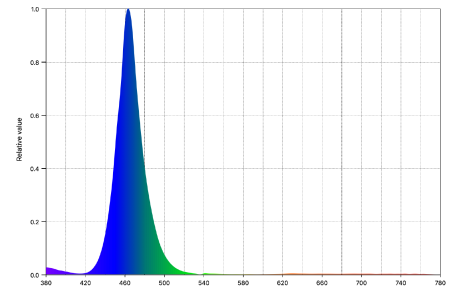
GREEN:

Peak Wavelength: 525nm
CIE 1931 x, y: 0.1862, 0.7180



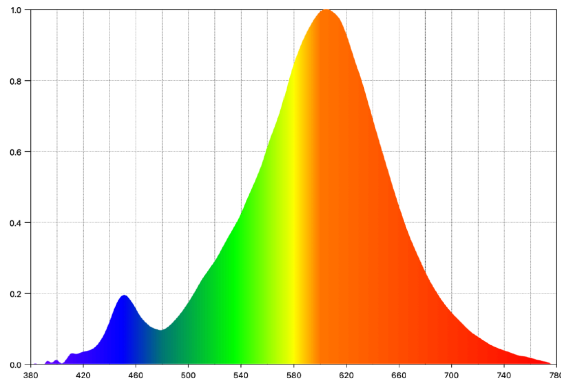
BLUE:

Peak Wavelength: 465nm
CIE 1931 x, y: 0.1320, 0.0659

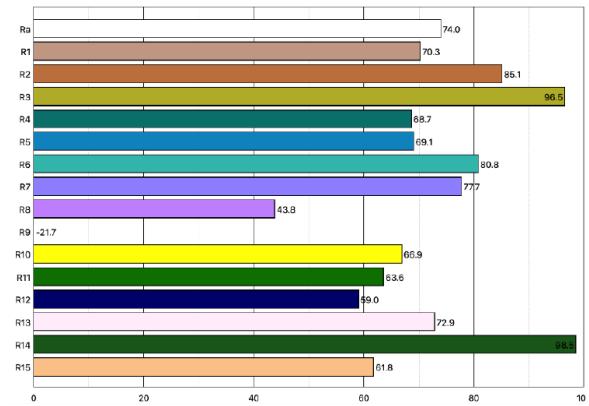


WARM WHITE:

Peak Wavelength: 605nm
CCT: 2475K



COLOR RENDERING:



NOMINAL BEAM ANGLE = 74°



NOMINAL BEAM ANGLE = 74°

