

PARAMOUNT PENDANT Q350

MEGALITE®
PRODUCT SPECIFICATION SHEET

DESCRIPTION

MEGA-LITE's determination is to develop innovative, unique fixtures that will give integrators and lighting designers the tools to expand their creativity. The distinctive Paramount Pendant Q350 does just that by bringing pendant lighting to a new dimension.

This over 3ft fixture is equipped with a 200W RGBWW panel down light and 150W RGBWW radiating cylinder light. It is a powerful pendant that was designed to illuminate mid to large applications. With a total of 16 segments of control the unit features 15 segments on the cylinder and 1 element on the down light. This 360° function creates multidimensional radiating color changing effects that can be used for very traditional or captivating applications. The optional 18° and 28° beam angle lenses give the ability to customize the beam based on the size of any room.

The Paramount Pendant Q350 was created with an integrated wireless solution and innovative design that allows it to be hardwired for permanent installation or quick disconnect, ideal for touring. It can be accessorized with a decorative cover for a more elegant finish.

Add a new dimension to your designs with the Paramount Pendant Q350.



UNIQUELY POWERFUL

Equipped with a 200W RGBWW panel down light and 150W RGBWW radiating cylinder light, this powerful pendant was designed to illuminate mid to large applications.



16 SEGMENTS

Features a total of 15 segments of control on the cylinder and 1 element on the down light. This 360° function creates multidimensional radiating color changing effects that can be used for very traditional or captivating applications.



INNOVATIVE DESIGN

This intuitive pendant design will allow integrators and lighting designers to expand their creativity. With an integrated wireless solution, it can be hard wired for permanent installation or quick disconnect, ideal for touring.

SOURCE

- DOWN LIGHT LED TYPE: 1 COB LED 200W
- CYLINDER LED TYPE: 90 SMD LED 1.5W

OPTICAL SYSTEM

- LENS ANGLE 10°

EFFECTS

- DOWNLIGHT & CYLINDER COLOR: RED, GREEN, BLUE, WARM WHITE
- SEGMENT CONTROL: 15 CYLINDER SEGMENTS, 1 DOWNLIGHT ELEMENT

CONTROL & PROGRAMMING

- WIRELESS DMX: WIRELESS SOLUTION RECEIVING
- DISPLAY: DIGITAL
- PROTOCOL: DMX 512, RDM
- DMX CHANNELS: 5 MODES OF OPERATION
- RDM: YES

PHYSICAL

- TOP & BOTTOM HOUSING MATERIAL: METAL
- CYLINDER HOUSING MATERIAL: ACRYLIC

THERMAL & RATINGS

- MAX AMBIENT TEMP: 104° F / 40° C
- MAX SURFACE TEMP: 140° F / 60° C

ELECTRICAL & CONNECTIONS

- POWER CONSUMPTION: UNIVERSAL 100-240V 50/60HZ
- POWER CONNECTION: PANEL MOUNT NEUTRIK TRUE POWER ONE CONNECTION/ SCREW TERMINAL FOR PERMANENT INSTALL
- DMX CONNECTORS: XLR 5PIN IN & OUT/ SCREW TERMINAL FOR PERMANENT INSTALL

RIGGING:

- INSTALLATION SYSTEM: MOUNTING BRACKET
- SECONDARY SAFETY: 1" EYE BOLT

INCLUDED ITEMS:

- MOUNTING BRACKET
- POWER CABLE

ORDERING INFO:

- PARAMOUNT Q350

ACCESSORIES:

- DECORATIVE COVER BLACK:
- 18° LENS:
- 28° LENS:
- 2 UNIT ROAD CASE:

PART NUMBER:

4460

4460ACCDEC

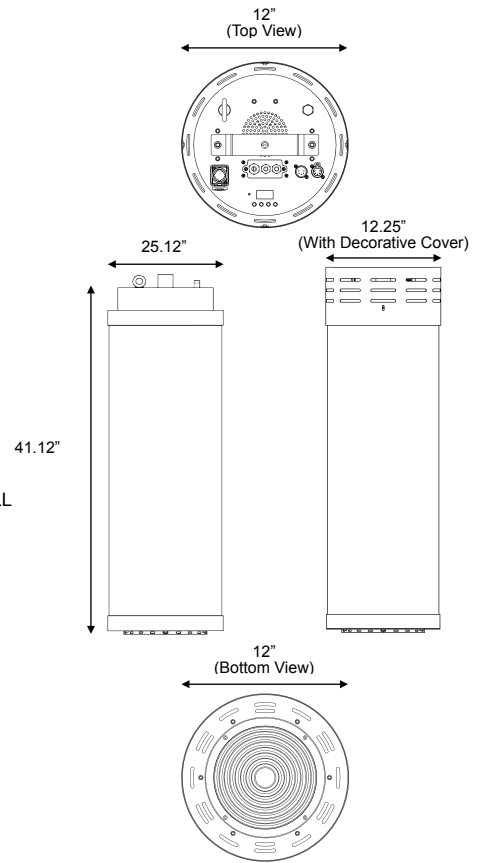
4460LEN18

4460LEN28

CAS44602

DIMENSIONS:

- FIXTURE SIZE: 41.12" X 12" X 12"
- FIXTURE WEIGHT: 43.5 lb (20 kg)
- PACKAGED SIZE: 45" X 16.5" X 16.5"
- PACKAGED WEIGHT: 50 lb (23 kg)



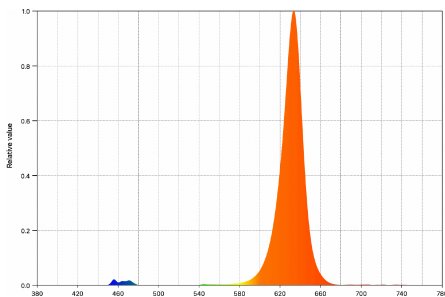
*Specifications subject to change

PHOTOMETRICS FOR CYLINDER:

Lumens @ Full Output: 3,912
Efficacy: 26 lm/W

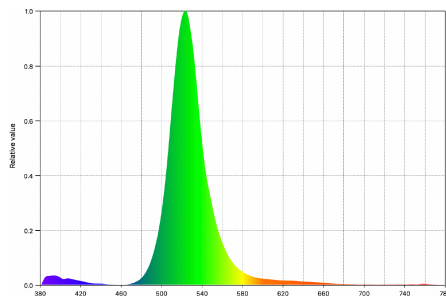
RED:

Peak Wavelength: 634nm
CIE 1931 x, y: 0.6802, 0.2985



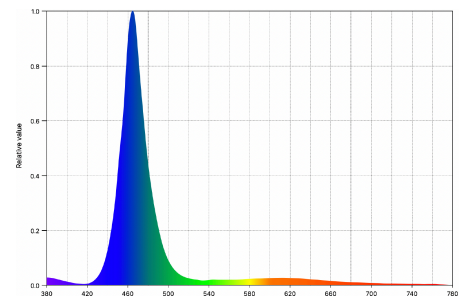
GREEN:

Peak Wavelength: 523nm
CIE 1931 x, y: 0.1916, 0.7123

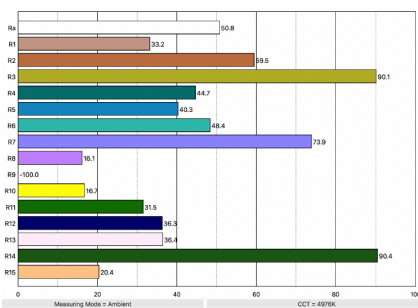


BLUE:

Peak Wavelength: 465nm
CIE 1931 x, y: 0.1583, 0.0921



COLOR RENDERING:



NOMINAL BEAM ANGLE = 67°



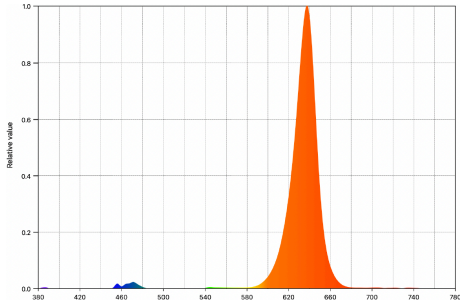
NOMINAL BEAM ANGLE = 67°



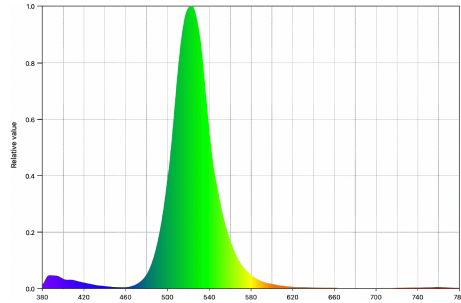
PHOTOMETRICS FOR DOWN LIGHT:

BEAM ANGLE	LUMENS @ FULL OUTPUT	EFFICACY
NO LENS	1,607	8 IM/W
18°	1,338	6 IM/W
28°	1,039	5 IM/W

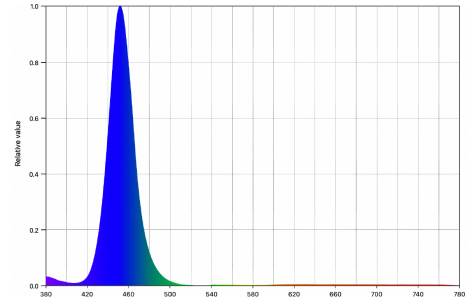
RED:
Peak Wavelength: 631nm
CIE 1931 x, y: 0.6823, 0.2935



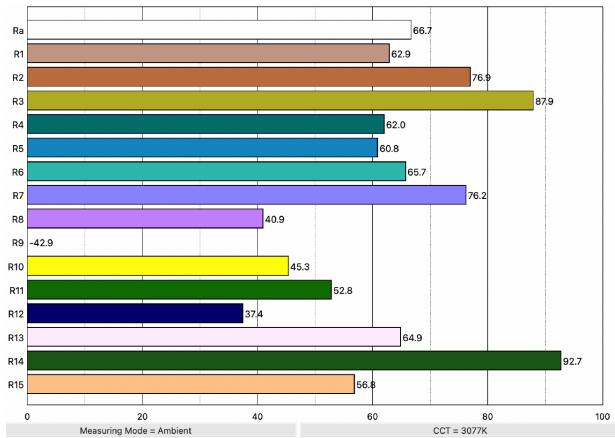
GREEN:
Peak Wavelength: 523nm
CIE 1931 x, y: 0.1783, 0.7014



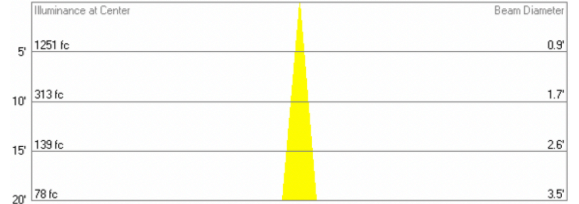
BLUE:
Peak Wavelength: 452nm
CIE 1931 x, y: 0.1530, 0.0307



COLOR RENDERING:



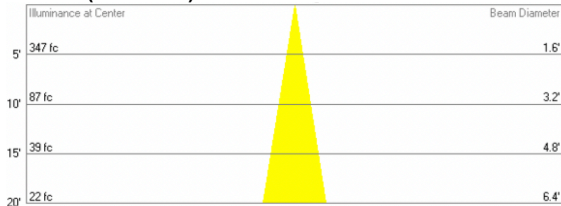
(NO LENS) NOMINAL BEAM ANGLE = 10°



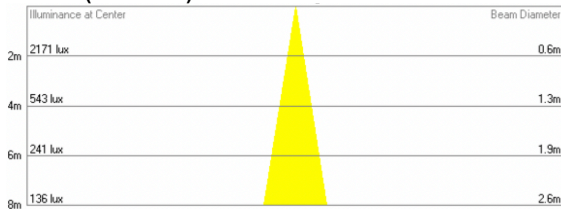
(NO LENS) NOMINAL BEAM ANGLE = 10°



(18° LENS) NOMINAL BEAM ANGLE = 18°



(18° LENS) NOMINAL BEAM ANGLE = 18°



(28° LENS) NOMINAL BEAM ANGLE = 28°



(28° LENS) NOMINAL BEAM ANGLE = 28°

