



MEMO_{CORE}CONTROL



USER MANUAL

Table of Contents

Safety Information	2
What Is Included	2
Specifications	3
Main Power Connection	4
DMX-512 Connection	4
Output Connection	4
Rear Panel	5
Display Board	6
Universe Activation	7
Size & Weight	8
Cleaning & Maintenance	9
Warranty	10
Customer Support	11

Check that the unit has not been damaged during transport



Read all cautions and warnings
prior to operation of this
equipment

Protection Against Fire



Fire

1. Maintain a minimum of 1 foot distance from any type of flame.
2. Do not install the unit too close to a heat source.
3. Make sure cables are properly secured away from movement.
4. Maximum surface operating temperature is 148°F.
5. Unit must not be left on for long periods of time.

Protection Against Electrical Dangers



Electrical

1. Disconnect power before servicing.
2. For connection to main power supply, proceed to page 4.
3. This unit must be earthed (electronically grounded).
4. Do not expose unit to rain or moisture.
5. The unit must be installed in a well ventilated area.
6. Be sure ventilation slots are not blocked.

Protection Against Mechanical Hazards



Mechanical

1. Unit surface may reach high temperature. Allow about 5 minutes after powering the unit before moving.
2. When repositioning rack ears, make sure they are securely attached.

What is Included

1pc Memo Core Control
1pc Power Con Type Cable to Nema 5-15
2pc Rear & Wall Support Rack Ears
1pc Bluetooth Keyboard and Mouse
1pc User Manual

Specifications

Part Numbers

Fixture

MC1095– Memo Core Control DMX RJ45 Outputs

Mechanical Specifications

Fastening System:	Removable Rack Ears for Wall Mounting, Rack Mounting and Rear Rack Mounting
Display:	Digital 6 Button Function Display
Power Connection:	Power Con (type) Cable Mounted to Nema 5-15 Connection
Housing:	Black Powder Coated
Input Connections:	1 Rear USB 3, 1 Front USB 3, 1 Screw Terminal Connection RS232&RS485
Output Connections:	8 DMX Over RJ45, 1 HDMI Monitor Connection, 1 HDMI Output with Audio Imbedded
Bi Direction Connection:	1 Ethernet RJ45, 1 Screw Terminal Connection RS232&RS485
Reset Button:	CPU Reset Button

Electrical Specifications

Power Input:	100-240V AC 50/60 Hz
Universes:	8 Built-in Universes
Display:	Playback Control Display
Power Consumption:	40W
Power Supply:	Electronic: Mean Well
Working Ambient Temp:	24°F -148°F
Cooling:	Temperature Controlled Fan
Fuse:	F2 240V

Control & Programming

Operating Software :	Enlighten (Memo Core Engine)
Timmer Setting:	Dusk to Dawn Time Scheduler Date and Holiday Scheduler
Lock Function:	Software Lock Feature



Main Power Connection

Caution!

1. Do not connect fixture to a dimmer system.
2. This unit has Auto switching power supply. It will respond to 110V or 220V automatically.
3. This unit must be earthed (electronically grounded).
4. Replace fuse only with the specified type and rating (F2 240V Size 5x20MM).

The occupation of the connection-cable is as follows:

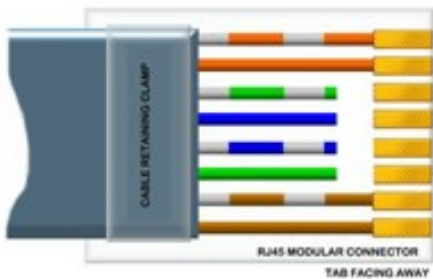
This fixture is equipped with an electronic power supply that will let the unit operate from 100V to 240V from 50 to 60Hz.

Cable (USA)	Cable (EU)	Pin	110V	220V
Black	Brown	Live	L	L
White	Light Blue	Neutral	N	L
Green	Yellow/Green	Ground		

DMX-512 Connection

The controller is equipped with 8 universes with RJ45 connection for DMX output. Only use a shielded twisted pair cable designed for RS-485 and RJ45 plugs and connectors in order to connect the controller with the fixture.

RJ45 8 Pin— DMX Output

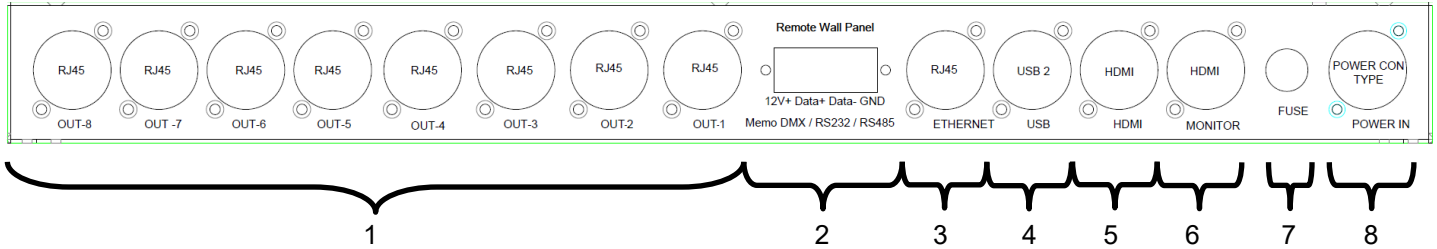


- 1 Signal +
- 2 Signal -
- 3 N/A
- 4 N/A
- 5 N/A
- 6 N/A
- 7 Ground
- 8 Ground

1. Signal (+)
2. Signal (-)
7&8. Ground

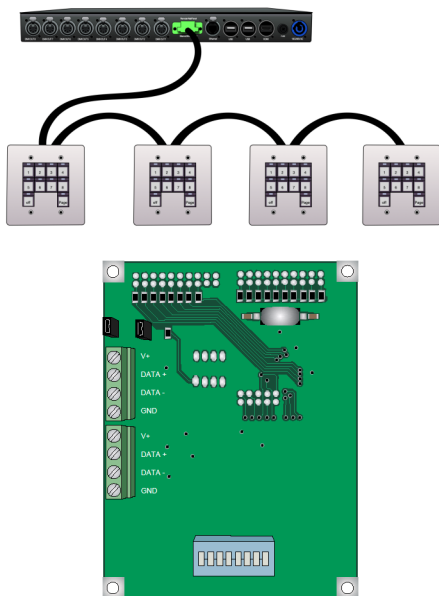
Rear Panel

Memo Core's output connection can be used to control DMX fixtures, video, and audio scenes on the Enlighten Software.



- | | |
|------------------------|---|
| 1= DMX Output: | 8 RJ45 output connections each representing a universe 512 DMX Channels. |
| 2= RS485/RS232: | 4 point Screw Terminal Port, used for connecting Memo Remote wall connection or any other type of command device that will send or receive RS232 or RS485 Commands. Pin 1 and 4 are used to send 12V Voltage. Unit ships prewired for Memo Remote Connection. If RS232 or RS485 is needed please specify at ordering. |
| 3= Ethernet: | RJ45 Connection used for internet connection that will allow for Remote Desk Top or Web Remote control. |
| 4= USB: | USB 3 connection typically used for keyboard and mouse connection. |
| 5= HDMI Output: | Single Layer HD Video 1920x1080 @ 59fps max. Optimal File Bitrate 21000Kbs. Audio imbedded HDMI connection type (no file transitions) |
| 6= Monitor: | HDMI output for software monitor view. |
| 7= Fuse: | F2 240V 5x20mm Fuse |
| 8= Power In: | Power Con type connection input voltage 100-240V AC50/60Hz (Proceed to page 4 for power connection). |

Memo Remote Connection



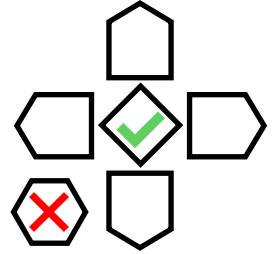
Memo Remote Installation: Memo Remotes are designed to trigger the preprograms created in the Enlighten Memo Core Software. For instructions on how to create programs, please visit the Enlightens You Tube playlist.

- 1) Memo Remote Units can be wired in Series, meaning they can be connected from one fixture to another fixture.
- 2) Memo Remote Units can be addressed to work the same as another or as independent control interfaces. The fixture is equipped to be addressed to the same or different zone. Up to 8 different zones can be assigned.
- 3) For more information on the Memo Remote, please refer to the fixture User Manual for Memo Remote.

Display Board

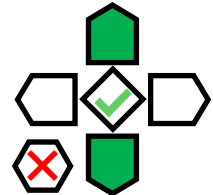
Display Screen gives you direct access to recorded scenes

**Mega Lite
Memo Core Control**



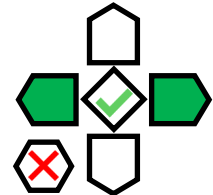
Page Select: Use the Up / Down arrows to select the correct button page

**Page 1
Blue FOH**



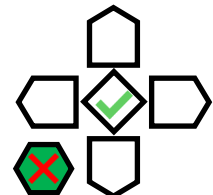
Button Select: Use the Left / Right arrows to select the correct button

**Page 1
Blue FOH**



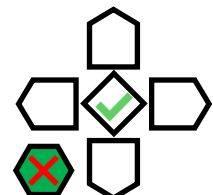
Clear All: Use the Red X button for Clear All function. To reengage a button look use the Left / Right button to select a scene.

**Page 1
Clear All**



Shutdown: Use the Red X button by quickly pressing the button 10X for shutdown procedure.

**Page 1
Shutdown**



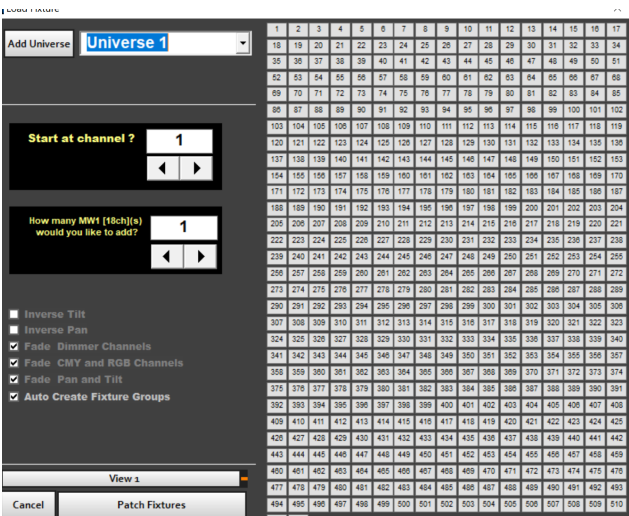
Universe Activation



To Activate New Universes

1: Select Fixture to Patch: Proceed to the Patch Icon on the upper left side. Click on the **Load / Patch New Fixture** icon

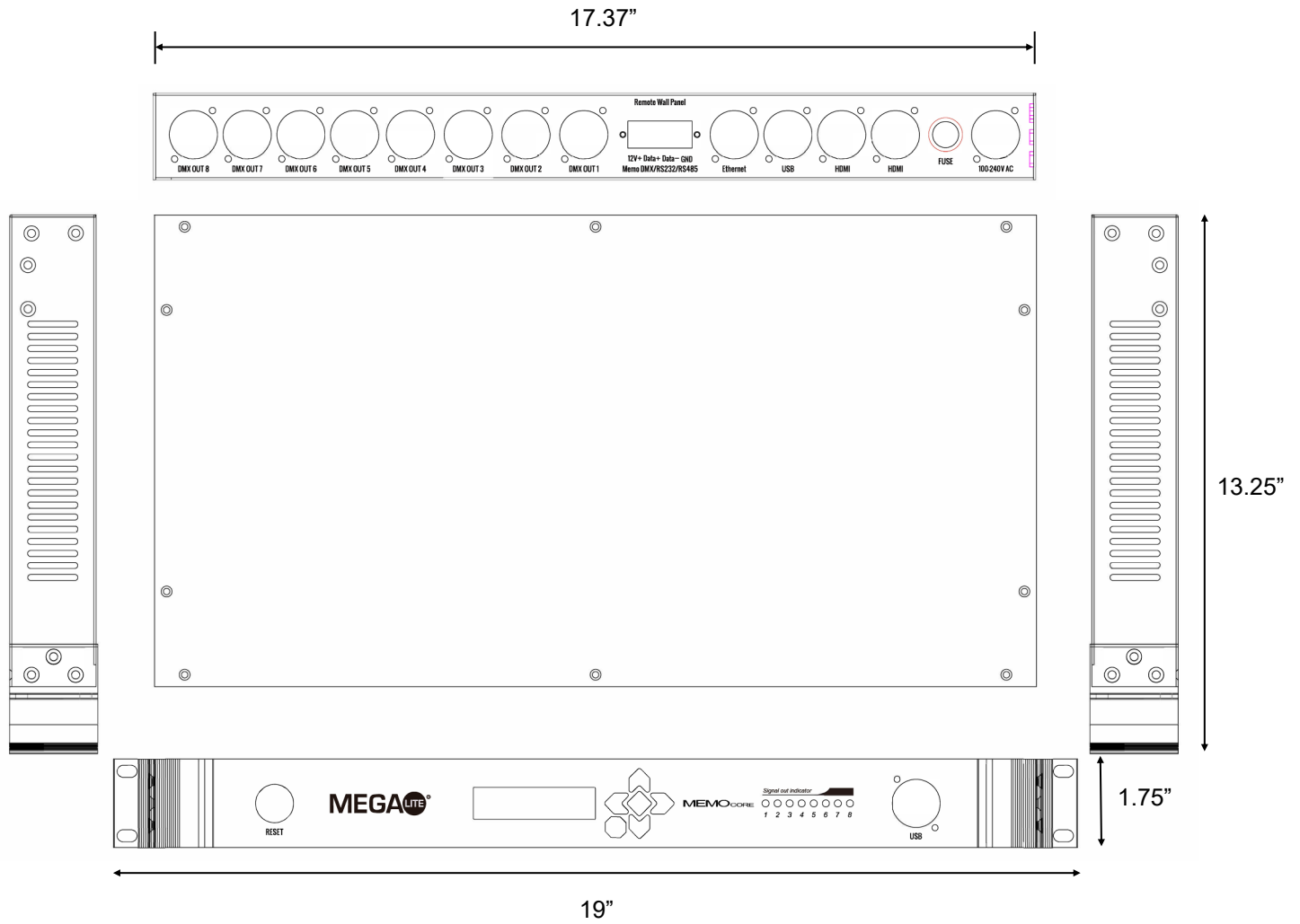
2: Make Fixture Selection: Make the selection of fixture manufacture and fixture model using the drop down fixture select. Press the green **Patch Selected Fixtures** once you have selected the fixture.



3: Select Universe: The Memo Core can have up to 8 Universes. Press the **Add Universe** button on the upper left side. The amount of time the required number of universe needed. On the right of the button, press the **Universe 1** button to select the universe drop down output you would like to connect your fixture into. Select how many of the same fixture you would like to patch and press on the **Patch Fixtures** button to finish patching your fixtures. Once the fixture is patched, the front LED display will display an active universe.



Size & Weight



Fixture Size	19" X 13.25" X 1.75"
Fixture Packaged	21" X 12" X 3.75"
Net Weight	8.8lb
Gross Weight	10lb

Cleaning and Maintenance

Installation Maintenance: The operator has to make sure that the unit is operating safely and has the installations and electronics checked by an expert every 2 years.

The following points have to be considered during the inspection:

- 1) All screws used for installing the device or part of the device have to be tightly connected and must not be corroded.
- 2) There must not be any deformations on the housing, fixation and installation spots (rack, suspension, trussing).
- 3) The electronic power supply cables must not show any damages, material fatigue (e.g. porous cables) or sediments. Further instructions depending on the installation spot and usage have to be adhered by a skilled installer and any safety problems have to be removed.
- 4) Ventilation ports must be clear of any debris.
- 5) Inner ventilation power supply fan must be clear of any debris.

Rigging the Fixture

Caution!

1. The installation must not be exposed to rain or moisture.
2. Unit may cause severe injuries. If you have doubts concerning the safety, do not install.
3. Unit is to be 24inches away from flammable materials (decoration material).
4. Installation location must have adequate air flow.

MEGA Systems, Inc. Warranty

MEGA SYSTEMS INC (“MSI”) hereby warrants to the original purchaser/owner (“Customer”), MSI products to be free of manufacturing defects in material and workmanship, for the warranty periods as defined below from the original purchase invoice date. This warranty applies exclusively to new MSI branded and/or distributed products listed below, purchased from an MSI AUTHORIZED dealer/ reseller. This warranty is not transferable and may or may not apply to products sold and/or forwarded outside the United States. Please contact MSI for applicable regional product warranty information.

The purchase of MSI product constitutes the Customer’s acceptance of all warranty terms and conditions as listed in this limited warranty statement. This warranty provides the Customer with legal rights, which may vary from state to state. Please contact MSI regarding warranty questions prior to purchasing.

Product / Series	Warranty Period	Coverage
Battery Powered LED	Six month battery, one year all other components	1, 2
Moving LED, Hazers	One year	2
Outdoor IP-Rated LED	Two years	3
House Light LED, Decorative LED, Compact LED, iCandy LED, Theatrical LED, Strobe Wash LED, Follow Spot LED, Production & House of Worship Control, Architectural Control, Theatrical Control, Dance Venue & Mobile DJ Control, Direct View LED Displays, and MV	Three years	4

1. Battery: 183 days/six months 2. Parts and Labor: 365 days/one year 3. Parts and Labor: 730 days/two years 4. Parts and Labor: 1095 days/three years

This limited warranty excludes any defects caused by, resulting from or relating to the following:

- Normal wear and tear of lamps, color media, brushes, contact rings, lamp sockets, belts and other parts prone to wear and tear.
- Misuse, abuse, improper handling, accident, alteration or attempts to repair by or on behalf of the owner or any person not authorized by MSI.
- Damage to the product resulting from acts of God, including, but not limited to, earthquakes, hurricanes, tornados, lightning and other natural disasters, fire, explosion, flood, riots, civil disorder or any other cause beyond the reasonable control of MSI.
- Exposure to harsh or excessively corrosive environmental conditions (whether indoors or outdoors), including, but not limited to, extreme temperatures, humidity, atmospheric conditions (including salinity or pressure), radiation (UV, infrared or nuclear), shock and conditions which exceed the product's Ingress Protection (“IP”) rating.
- Use of the product in a manner which exceeds the applicable product specification, including, but not limited to, exposure to excessive, insufficient or other voltage conditions.
- Installation or use of the product not in accordance with the technical documentation, MSI guidelines (as may be posted on its website at www.megasystemsinc.com from time to time or otherwise designated by MSI or its brands) or applicable building and electrical codes, regulations and standards.
- Failure to maintain the product in accordance with the technical documentation.
- Natural degradation and color shift of the LED source over the course of normal product use.
- Slight deviations in the specified values of intensity and color that do not affect the functionality of the product.
- Use of the product not for its intended purpose.

All warranty claims are evaluated under the terms of this limited warranty. If a product falls within the warranty period and if, upon examination by MSI it is found to have failed for a covered cause, MSI will, at its sole discretion, repair or replace the defective part or product or reimburse the purchaser a pro-rated portion of the purchase price based on the percentage of the warranty period still remaining as of the date that the returned product was received by MSI. Should a replacement part or product be discontinued or unavailable, MSI reserves the right, in its sole and absolute discretion, to substitute a comparable replacement part or product for the defective part or product. MSI warranty obligation hereunder is limited solely to the repair or replacement of or reimbursement for the particular parts or products determined by MSI to have failed for a covered cause within the warranty period. In no event shall MSI be responsible to replace or reimburse purchaser for any products or portions of a system that MSI determines has not failed for a covered cause within the warranty period, even if such other products or portions of a system are used together with products being repaired or replaced by MSI under this warranty and the repaired product differs in brightness, colors or any other attribute after the repair.

Costs of removal, shipping to MSI or its authorized representative and reinstallation are solely the responsibility of the purchaser. If MSI determines that the product is covered by this limited warranty, it will only pay for parts and labor as indicated by product type. If MSI determines that the product is not covered by this limited warranty, the purchaser will have the option of paying for the repair (if the product can be repaired) and the purchaser shall be responsible for the cost of shipping the repaired product back to the purchaser. MSI reserves the right, in its sole and absolute discretion, to decline any repair.

IN NO EVENT SHALL MEGA SYSTEMS, INC. BE LIABLE FOR ANY INCIDENTAL, CONSEQUENTIAL, SPECIAL, INDIRECT OR PUNITIVE LOSS OR DAMAGE OF ANY KIND, INCLUDING, BUT NOT LIMITED TO, LOSS OF PROFITS OR REVENUES, LOSS OF USE OF THE PRODUCT OR ANY OTHER GOODS OR ASSOCIATED EQUIPMENT, DAMAGE TO ANY ASSOCIATED EQUIPMENT, COST OF CAPITAL, COST OF SUBSTITUTE PRODUCTS, FACILITIES OR SERVICES, DOWN TIME COST, INSTALLATION OR LABOR COSTS, OR CLAIMS OF THE PURCHASER’S CUSTOMERS, WHETHER BASED ON WARRANTY, CONTRACT OR NEGLIGENCE, ARISING IN CONNECTION WITH THE SALE, USE OR REPAIR OF THE PRODUCT. MEGA SYSTEMS INC’S MAXIMUM LIABILITY SHALL NOT, IN ANY CASE, EXCEED THE PURCHASE PRICE OF THE PRODUCT THAT GIVES RISE TO THE CLAIM.

EXCEPT FOR THE LIMITED WARRANTY SET FORTH HEREIN, ALL PRODUCTS SOLD BY MEGA SYSTEMS, INC. ARE SOLD “AS IS” WITHOUT ANY WARRANTY, EXPRESS OR IMPLIED, STATUTORY OR OTHERWISE, INCLUDING, BUT NOT LIMITED TO, IMPLIED WARRANTIES OF MERCHANTABILITY AND FITNESS FOR A PARTICULAR PURPOSE, ALL OF WHICH ARE EXPRESSLY AND SPECIFICALLY DISCLAIMED BY MEGA SYSTEMS, INC.

Customer Support

Mega Lite has a customer support line to provide set up help and to answer any question should you encounter a problem. Please visit our website for any other related technical documents. For service related issue please contact our service dept.

Monday—Friday 9am to 6pm CST

Voice: 210-684-2600

E-mail: service@mega.lighting

Manual Version

Please Visit www.mega.lighting for the most up to date manual version

Document Version	Date	Fixture Software	Notes
1.0	08/27/2021	V1.0	

MEGA LITE®

Mega Lite
18668 Highway 16N
Helotes, Texas 78023
Ph 210-684-2600 Fax 210-855-6279
www.mega.lighting / info@mega.lighting

