

Check that the unit has not been damaged during transport



Read all cautions and warnings
prior to operation of this
equipment

Protection Against Fire



Fire

1. Maintain a minimum of 1 foot distance from any type of flame.
3. Replace fuse only with the specified type and rating.
4. Do Not install the unit too close to a heat source.
5. Make sure cables are properly secured away from unit movement.
6. Maximum surface operating temperature 104°.

Protection Against Electrical Damage



Electrical

1. Disconnect power before lamp replacement or servicing.
2. For connection to main power supply proceed to page 6.
3. This unit must be earthed. (electronically grounded)
4. Do not expose unit to rain or moisture.
5. Unit must not be left on for a long period of time.

Protection Against Mechanical Hazards



Mechanical

1. Use safety chain when hanging unit.
2. Use quality clamps or bolts when positioning unit
3. Do not open unit risk of electrical shock.

INTRODUCTION

The ARTNET-DMX 8 is a reliable and versatile ArtNet-to-DMX adapter designed to expand DMX networks. It allows conversion of Ethernet data into 8 universes of DMX signal. Additionally, it can be used as a DMX Splitter with 2 inputs to 8 DMX signal outputs. It is intended for control of all kinds of lighting products such as conventionals, moving lights, LEDs, video and media via DMX signal. To optimize the performance of this product, please read the user manual carefully before use.

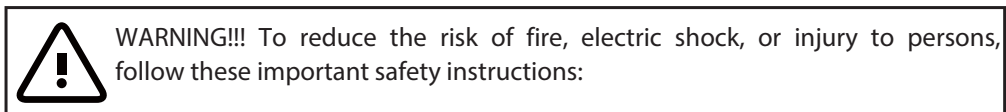
What Is Included

The following items are included in the box:

- 1pc ArtNet-DMX 8
- 1pc Power cable
- 1pc User Manual

Carefully unpack the carton, check the contents to ensure that all parts are present, and have been received in good condition. Contact your supplier immediately and retain packing material for inspection if any part is missing or damaged.

Safety Instruction




- This product is intended for indoor use only!
 - Always turn off, unplug power and allow fixture to cool before servicing.
 - Ensure that fixture is properly grounded.
 - Please keep this User Guide for future consultation.
 - To prevent risk of fire or shock, do not expose fixture to rain or moisture.
 - The unit must be installed in a location with adequate ventilation. Be sure no ventilation slots are blocked.
 - Make sure power cord is never crimped or damaged.
 - Do not remove the top cover under any conditions. There are no user serviceable parts inside.
-
- Disconnect the unit's main power when left unused for long periods of time.
 - Never connect this unit to a dimmer pack.
 - Never operate this unit when it's cover is removed.
 - Any damage caused by manual modifications are not subject to warranty.

Indicators

On the front panel there are indicators described as below.

| Indicator | Behavior | Meaning |
|------------|----------|---|
| LINK | Solid | Ethernet IN is connected to ArtNet source |
| DATA | Blinks | Unit receives ArtNet signal |
| DMX 1 | Solid | DMX IN-1 is connected to DMX source |
| DMX 2 | Solid | DMX IN-2 is connected to DMX source |
| Signal Out | Solid | DMX OUT ports output DMX signal |

Software updating

- 1) Format your USB stick under FAT mode.
- 2) Copy the new software to the root directory of your USB stick.
- 3) Insert USB stick in the USB port in the front panel.
- 4) Press Menu button till "SYSTEM setup [new software]" shows on display.
- 5) Press  button to update software.



USB port for software updating via USB-stick only. Do not connect any peripheral device (mouse, keyboard or similar).

SPECIFICATIONS

Power Input: AC 100-240V 50-60Hz
Power consumption: 6W
Data inputs: EtherCon and 3pin XLR In(or 5pin)
Data outputs: 8 x 3pin XLR Out (or 5pin) Data
Thru: EtherCon
Dimension: 482 x 168 x 44 (1U rack mount) Weight:
2.2 kg

IMPORTANT INFORMATION!

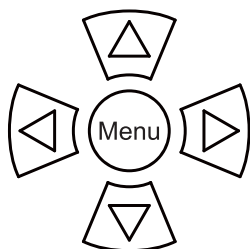
In order to optimize the recovery and recycling of the materials that old appliances contain and reduce the impact on human health and the environment, ensure that this product is recycled at the end of its life.



OPERATING INSTRUCTIONS






Menu Buttons

The setup of menu is operated by 5 buttons as described belows.

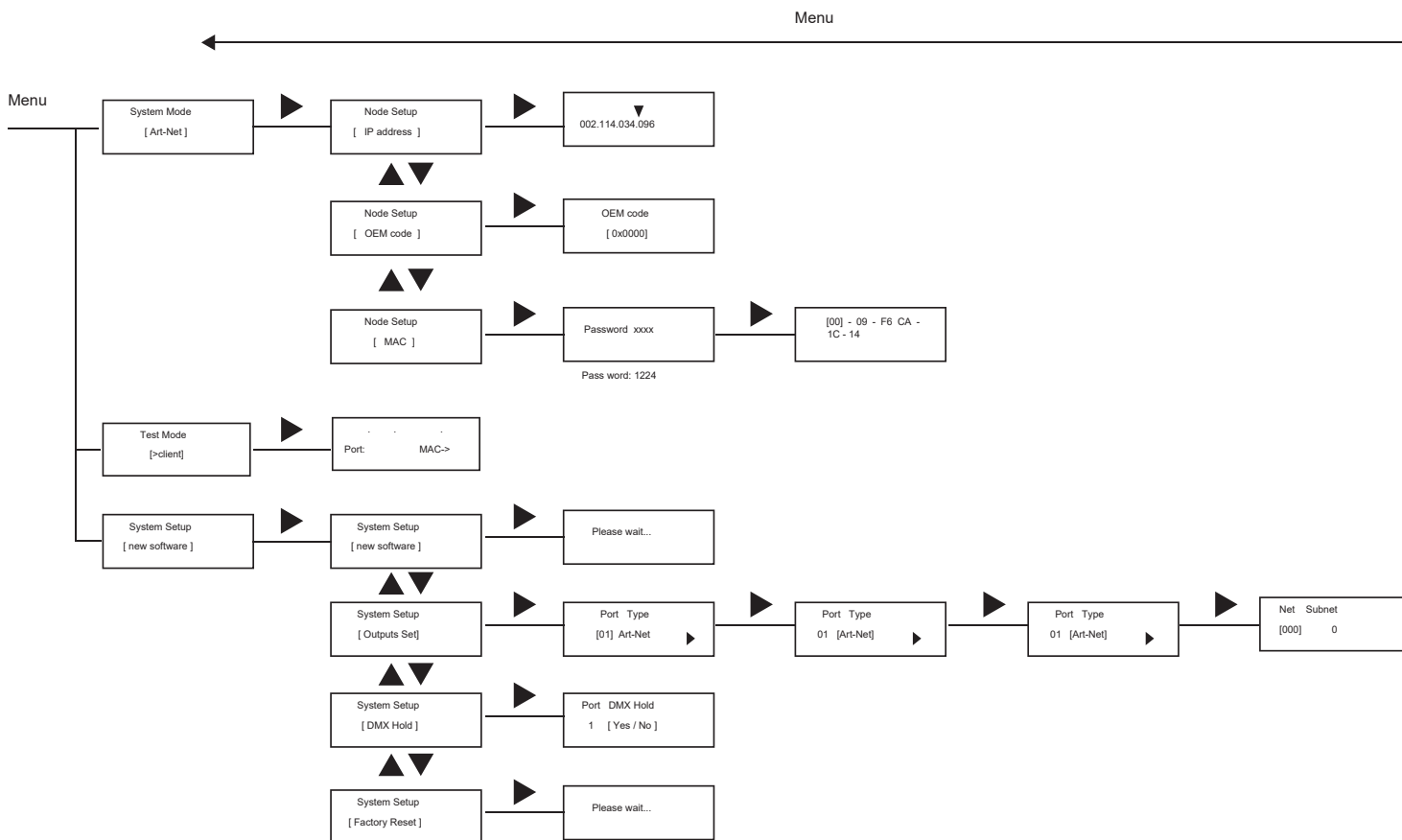


Menu Button

When navigating the menu:

- Use  to scroll 1st level menu or back to higher level. to increase value. to decrease value.
- Use  to move right.
- Use  to move left.
- Use 
- Use 

Menu Map



Warranty Information

Warranty Conditions

-Unless otherwise stated in writing, your product is covered by a one year parts and labor limited warranty.

-LEDs are not guaranteed to match in color temperature or output.

-It is the owner's responsibility to furnish receipts or invoices for verification of purchase, date, and reseller or distributor. If purchase date cannot be provided, date of manufacture will be used to determine warranty period.

-Goods returned under warranty must follow the proper authorization procedure and must be accompanied by a copy of the original invoice.

-Goods repaired under warranty will be returned to the owner with the freight prepaid by MSI via the most economical means of shipment.

-Repair or replacement as provided for under this warranty is the exclusive remedy of the consumer. MEGA SYSTEMS INC. makes no warranties, express or implied, with respect to any product, and Mega Systems specifically disclaims any warranty of merchantability or fitness for a particular purpose. Mega Systems shall not be liable for any indirect, incidental or consequential damage, including lost profit, sustained or incurred in connection with any product or caused by product defect or the partial or total failure of any product regardless of the form of action, weather in contract, tort (including negligence), strict liability or otherwise, and weather or not such damage was foreseen or unforeseen.

- Warranty is void if the product is misused, damaged, modified in any way, or for unauthorized repairs or parts. This warranty gives you specific legal rights, and you may also have other rights which vary from state to state.



Mega-Lite
18668 Highway 16N
Helotes, TX 78023
Ph 210-684-2600 Fax 210-855-6279
www.mega-lite.com / info@mega-lite.com